



# The Round Hill Reporter

Issue 48  
June 2012

Street Event cancelled this year – we need more volunteers to run one next year, see page 3

## Round Hill Research Results

*Ninety three people responded, and this is what they said*

A big thank you to everyone who completed our community survey giving your views about living in Round Hill – with over 90 responses the results provide a strong basis to inform the future work of the RHS as well as providing us with evidence to influence the work of our councillors and council where it affects Round Hill. The survey was funded through the University of Brighton's Community, University Partnership Programme with students Yi-Chun Chen and Tony O'Mahony, together with tutor Jim McLoughlin contributing to the survey design and analysis.

The prize of a meal for four at the Round Hill Tavern worth £100 was won by Caroline of Crescent Road, resident since 2005, after her survey response was chosen at random by one of our student researchers. She is absolutely delighted and looking forward to enjoying a night out.

We will be producing a full report of the findings, together with proposals of how residents can take forward the issues raised. This will be written in discussion with local councillors, council officers, community support officer and other relevant groups and published on our website. If we have sufficient funding, we will also produce a printed version for distribution. In the mean time, we thought you'd like to know about the headline findings.

Overwhelmingly you told us you and your families enjoy living in Round Hill, whether you have been here for 2 months or 70 years (the 'newest' and 'oldest' residents who responded). You care very much about maintaining, improving and safeguarding the Round Hill locality and said it is more than just a place to live, describing it as 'close knit' and a 'quintessentially Brighton-esq locale' with its hilly terrain and quirky architecture. The consistency of your responses indicates that a strong sense of community and belonging quickly develops for everyone who comes to live here.

Round Hill seems united in its differences, being made up of young and old, new comers and long termers. It is first and foremost a community with strong neighbourly alliances where "people feel

---

Patch Fest **page 3** • Green Pages **page 4**  
Controlled Parking coming back **page 5** • Coping with household emergencies **page 6** • Garden Gadabout **page 7**

---

Printed for the  
Round Hill Society  
by



# Round Hill Survey continued

a part of" and this feeling is important to residents. You enjoy our community events (and have made suggestions for future activities) and have lots of skills/interests you'd like to share within the locality. This is great news, however lots of you also pointed out worries, that together we can help improve to make things even better for us all (with the exception of getting rid of the hills – which at least two people requested!)

## Your top 8 Round Hill concerns

Dog fouling	80% very/sometimes concerned
Refuse/recycling mess & rubbish in gardens)	75% very/sometimes concerned
Difficulty parking	75% very/sometimes concerned
Thoughtless/poor driving	70% very/sometimes concerned
Graffiti	60% very/sometimes concerned
Poor air quality (WTS & Lewes Rd)	60% very/sometimes concerned
Noisy neighbours	50% very/sometimes concerned
Anti-social behaviour on streets	50% very/sometimes concerned

Some of these issues are more difficult to resolve than others – but we are researching how we can best improve wherever possible. Plans will be in the full report.

**A few of you have offered your help, but the committee would really love to have more volunteers, especially to lead community activities and events. If you can help, please contact Rob Stephenson.**

try one of our delicious

# Stone oven Pizzas

homemade on the premises using the finest fresh produce and cooked at 300 degrees in our stone-based pizza oven ... and still serving classic pub food as well.



**The Roundhill Tavern**

100 Ditchling Road Brighton BN1 9SY   01273 683 967   [www.roundhilltavern.co.uk](http://www.roundhilltavern.co.uk)

# Summer Street Party

## *Seeking help for NEXT year*

Even though we had planned to run a simpler version of the D'Aubigny Road Street Party this year – by holding it on the car park of Richmond House, in a great big marquee – we have sadly decided to cancel it.

The tent was going to cost a lot of money, but we have most of it. And there were potential problems with securing permission from the landlords of the site, but they should have been soluble.

The key problem was a lack of enthusiasm from your committee, perhaps generated by the moist nature of the last two events. And a feeling that it was just too much to take on without a good bunch of active volunteers.

We could try again next year but really will need to know that there are folk ready and willing to help, several hours a week for a few weeks.

One thing we had to arrange was to have people in the tent overnight. This might be fun. It could be a positive part of a future event. Involve kids.

Just step forward now and leave your name and contact details and we'll get back to you.

## Relax, Detox, Re-balance, de-stress With Auricular Acupuncture & Qi-gong



For: Anxiety, Depression  
Stress, Sleep  
Energy levels, Mood swings  
Morning sickness  
PMT & regulating menstruation  
Post party detox  
IBS/digestive problems

Only £8.00. Roundhill Crescent

Tuesdays from 7.30pm  
Contact Juliana to book a time  
Tel: 07817 541163

Juliana@brighton-acupuncture.co.uk  
www.brighton-acupuncture.co.uk

"A wonderfully calm & welcoming space that helps me refocus and relax" J.O.

"...increased energy levels since starting my treatment" S.B.

"I am amazed by how much it helps with my woes & stresses" J.N.

"I have greater energy & a sense of inner peace" M.F.

"has helped me sleep more soundly, and increased my feeling of well being" N.L.

# PatchFest – Sat 7<sup>th</sup> July

## *Music, Food, Beer tent, Market, Games and more Music*

What may be bad news for Round Hill is an opportunity for those willing to cross the Lewes Road. The very date we had planned our Car Park Event (see above) is also the date set for the Party on the Patch, just up Hartington Road and through the little lane after the Old Viaduct Court sheltered housing on the right.

Saturday 7<sup>th</sup> July from 1pm until 9pm is Patchfest at the William Clarke Park. Like us they also need volunteers, see what they need on the website – [www.williamclarkepark.org](http://www.williamclarkepark.org).



# Truly, Madly, Deeply

## 'Pashionate Musicke' of the Baroque Era

Make a date to be at the seaward end of Waterloo Street in Hove on Saturday 9<sup>th</sup> June at 7.30pm. For there, at the delightful church of St Andrew, will be a musical evening starring two local musicians. You will know Stefan Holmstrom (Baritone) from his regular cartoon input to the Reporter, and you may have met Massimo Redaelli (Viola da gamba) in the corner shop on the Upper Lewes Road. I can tell you nothing of Howard Beach, the third musician of the evening, except to say he will be playing the harpsichord – which is probably all you need to know.

Tickets can be bought in advance by ringing 603459, or on the door for £7 (£5 concessions).

You will be rewarded with songs and music by

J S Bach, Monteverdi, Frescobaldi and Hume



### Shakti Stores

*Your local Premier retailer*

Open 7am-10pm daily

Your local convenience store and newsagent

Fresh organic bread and milk daily, large  
vegetarian and organic range, frozen food

OFF LICENCE – great selection of good quality  
wines

102 Ditchling Road  
Established December 1983

## Green Pages

The 2012 edition of the brilliant guide to greener living in Brighton and Hove is now available from fairly local outlets including Fanny's Deli in Islingword Road, The Cowley Club opposite the Co-op on London Road, Moksha Cafe opposite St Peter's Church and the Jubilee library.

Its free, produced by the Peace and Environment Centre, and full of useful places and bodies to help you reduce your impact on the planet.

You can also get a copy if you decide to visit the Eco-Technology Show on the 15th and 16th June at the football stadium out at Falmer. Loads to do and see, talk to people about better insulation or solar panels, try a new bike, look at energy efficient appliances and discover sustainable food sources. Attend any of dozens of workshops and talks. Learn more at [www.ecotechnologyshow.co.uk](http://www.ecotechnologyshow.co.uk)

# Tackling Traffic Issues

## *CPZ for Round Hill? 20mph zones? Lewes Road bus & bike lanes*

A few weeks ago Bonnie, our PCSO, told someone that she had heard that the Council was planning to ask residents of Round Hill, and the area between Ditchling Rise and Stanford Avenue, (but not the Upper Lewes Road or the Triangle) whether they want to have a Controlled Parking Zone. This must reflect the success of campaigns in both areas by groups keen to have a CPZ. Shame we had to learn of it so indirectly. Sometimes one wonders if Councils understand their role in the process of consultation. Anyway – you know now, and it will start in the autumn.

A common story seems to be that too many people in the Viaduct Rise area CPZ are refusing to buy permits whilst they can just drive over to Princes Road and Crescent Road to park for free. The same thing is happening north of London Road Station. And the solution seems to be ‘extend parking controls’.

But there is a bigger picture here. Lets assume for the moment that global warming is real and the Government is right to say we must reduce our carbon emissions by 80% by 2050. Can you reduce your mileage by 80%, or run a car with just 20% of the engine capacity of your current model? We’d have a lot more parking places if all cars were Fiat 500s or Smart cars.

The Lewes Road improvements include reducing road width available for cars by increasing the space dedicated to buses and bikes. This might increase car journey times, and may thus encourage drivers to become cyclists and bus users.

Cycle lanes help to protect cyclists, and so will 20 mph zones in all residential areas, a plan which opened for consultation in Brighton and Hove on 2<sup>nd</sup> June. A British Medical Journal study published in 2009 showed that

cyclist casualties in London fell by 17% when 20mph zones were introduced. In Portsmouth cycling injuries nearly halved after 20mph zones were established.

A recent survey of 1550 commuters carried out on behalf of the road safety charity Brake reported that only 10% regularly commute by bike, but over a third would, if cycling was perceived as safer. Cycle lanes and slower traffic would help this perception.

Meanwhile in North Laine 12 roads are about to get contra-flow cycle lanes, making it easier to get about by bike in one of the most interesting parts of the city.

We are animals designed to move about on foot. Evolution has set us up to be good at coping with irregular food supplies and fleeing from threats. Research is revealing that occasional fasts are good for health, and so is regular but brief vigorous exercise. What we are not designed for is regular generous supplies of foods and lack of exercise – but it’s the way we seem to be going – at great and growing expense for our health services, and more – a friend was taken to London for cremation a while ago because he was too big for local facilities.

So get out of the car and walk, run or cycle to work, cinema and pub – for a half or two.

Whilst you walk or cycle take time to look at the drains (gullies) in street gutters. Many are full of grit, leaves and junk. They no longer take rainwater away, so that it flows downhill and pools on the roads. If you see a problem report it so that it can be cleared. Cutbacks mean they are not cleaned regularly, only on demand.

Report blocked gulleys to Cityclean on 292929



# Tips for Householders

## *Know what to do when the emergency happens*

**Jim Grozier is a local guy who has been getting concerned at the number of people he meets who do not know where their water supply can be turned off, or how to isolate their lighting circuits, or where the main gas tap is found.**

He has put together a section in the Ditchling Rise Area Residents Association website where such folk can easily learn these household basics before the emergency happens when they'll need to act quickly. You can read it for yourself at [www.ditchlingrise.org/?page\\_id=328](http://www.ditchlingrise.org/?page_id=328)

## **Police non-emergency incident reporting**

And here's another tip – when the wing mirror gets broken or the planter goes missing or you spot what might be drug dealing on the street report it on the non-emergency number 101 or report it by e-mail at [contact.centre@sussex.pnn.police.uk](mailto:contact.centre@sussex.pnn.police.uk) so that the event is recorded and helps the police to build up data which can help identify patterns and hotspots. It really can help the police to do a better job.

## **[www.roundhill.org.uk](http://www.roundhill.org.uk)**

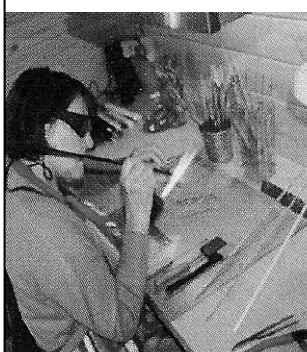
And another tip - check the Round Hill website between Reporters to see whats new.

## **Want to sing in a community choir?**

Contact Carol Hall on 687636 or [carol.hall13@btinternet.com](mailto:carol.hall13@btinternet.com). She is keen to get 10 or so folk together to start a local Community Choir.

## **Want to commission some family photos from a local photographer?**

Contact Lucy Goodayle on [www.lgfamilypphoto.com](http://www.lgfamilypphoto.com) and see more of her work at [www.lucygoodayle.com](http://www.lucygoodayle.com)

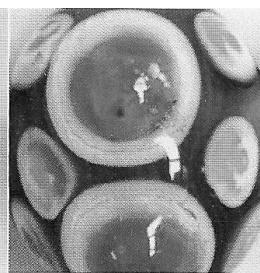
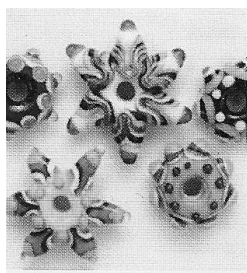


### **Learn to make your own unique glass beads (lampwork) at my well equipped, Round Hill studio.**

**What to expect?** All materials, use of equipment and a course information booklet is included. You will keep all the beads we make, including my demonstration beads. My aim is to get you making good beads - but you'll also learn what equipment you might want to buy, health and safety knowledge and hopefully an exciting new skill that you will want to continue. I have had lots of teaching experience and will tailor the day to suit you – so you can learn as little or as much as you want. Refreshments (including lunch on full day courses) are included. (I also hold public liability insurance.)

**Prices 1 person 2 people Taster (3 hours) £70 £130 Full day (6 hours) £120 £210**

**How to book:** Contact Annie McCabe on 07801701551, or email me at [amccabebrighton@gmail.com](mailto:amccabebrighton@gmail.com) or through [www.anniemccabe.com](http://www.anniemccabe.com) and we can book a mutually convenient day/time.



# The Garden Gadabout

*Sunday 24<sup>th</sup> June and Sunday 1<sup>st</sup> July in Round Hill*

Maybe summer will have arrived by the end of June so that you will be able to enjoy visiting the local gardens opening in aid of the Sussex Beacon



Guidebooks are available now on the website or in local shops, and cover far more gardens than the few in Round Hill, but please do visit the local ones, every open garden has had extra

care and attention lavished on it especially for your enjoyment. You may even be able to have tea or wine as part of your visit, and perhaps buy a plant, a book or something else. Round Hill open gardens are:

**1 Belton Close, 42 Richmond Road, 14 Mayo Road (only on 24<sup>th</sup> June), 118 Richmond Road & 51 Upper Lewes Road.**

A day ticket costs £7 and gives access to all these gardens plus any others open that day. There are a further 34 gardens open on the 24<sup>th</sup>, and 15 more on the 1<sup>st</sup>, spread between Seaford and Hove. Buy your ticket from the first one you visit.

## First Swift of Spring?

Martin Scolding, birdwatcher of this parish, reported on the Round Hill Yahoo site that he spotted a pair of swifts high over Round Hill on the morning of 30<sup>th</sup> April. This is much earlier than previous years.

## Community Transport in Round Hill

Do you find it difficult to get to the shops? Do you fancy getting out and about in Sussex? Do you want to meet other people and have a day out? All these are possible using your local Community Transport.

Easylink is a door to door transport service for people – including wheelchair users – who find it difficult or impossible to use the normal bus service. A minibus will pick you up from your front door, and return you back to it. The driver will even carry your shopping for you. Return fares is £3.50 for your local supermarkets, ASDA on Tuesday and Friday, the city centre on Wednesday and Friday. Just phone 677559 to register as a new user and book a place.

Or you could book a group trip – to a particular event or special destination. Just telephone them on 677559 to arrange. 12 people going to Tunbridge Wells for a day might cost about £12 each for vehicle and driver. Transport to a country pub for lunch might cost £6 each.





**Round Hill Reporter**  
51 Upper Lewes Road  
Brighton BN2 3FH  
[news@roundhill.org.uk](mailto:news@roundhill.org.uk)  
[www.roundhill.org.uk](http://www.roundhill.org.uk)

## The Round Hill Society Committee

Co-chair	Jean Brennan	87 Round Hill Crescent	693100
Co- chair	Annie Rimington	8 D'Aubigny Road	609086
Secretary	Rob Stephenson	51 Upper Lewes Road	673511
Treasurer	Carol Hall	36b Princes Road	687636
Conservation	Ted Power	55 Princes Road	688102
Others	Deborah French	3 Mayo Court, Mayo Road	
	Kevin Tansley	11 Wakefield Road	672648
	Robin Morley	112 Richmond Road	
	Jenny Teare	15 Princes Road	
	Boo Vaughan	21 Princes Road	07971 823014
	Emma Daniel	15 D'Aubigny Road	

## Directory

### Window Cleaners

**Bishop Window Cleaning** M 07939 161904  
**Alan Barnett** T 606710  
**Matt Cook** E [weatherwatchers@hotmail.com](mailto:weatherwatchers@hotmail.com)  
T 07940 071302

### Carpenters

**Richard Simpson** W [simpsoncarpentry.com](mailto:simpsoncarpentry.com) M 07754 650135 E [richard@simpsoncarpentry.com](mailto:richard@simpsoncarpentry.com)  
**Beacon Woodwork** M 07843 247411  
E [steffan@beaconwoodwork.co.uk](mailto:steffan@beaconwoodwork.co.uk)  
**John Mildoon** M 07890 689982

### Gardeners

**Sadie at Plant People** T 562425 M 07881 992762  
**All Out** Tree surgery and garden clearance.  
Contact Giles T 243026 M 07989 537828  
**Bloomers** Contact Sophie M 07773 984421  
E [brightonbloomers@gmail.com](mailto:brightonbloomers@gmail.com)

### Decorators

**Preston Decorators** Princes Road M 07976 893087  
**Peter Skinner** T 558790/ 889964  
**John Hoyle** Round Hill Crescent M 07743 751665  
**A & D Decorating** T 241392

### Plumbers

**Tim Packwood** 88 Waldegrave Road M 07703 253740  
**C R Laker** 76 Rugby Road T 501006 F 507745  
**Tom Thumb** M 07973 551841  
**Lynette Ward** Gas Safe Regd. M 07910 763689  
T 302574 E [lynette1.ward@ntlworld.com](mailto:lynette1.ward@ntlworld.com)  
**The Boiler Works** M 07930 877575 T 820551

### General

**Getafix** mobile cycle mechanic T 693247 M 07928 116037  
**Auto-bodycare** Car Service Centre 25 Ditchling Rise T 696030  
**Jim Gustard** Waste clearance incl trade, bulky waste  
174 Hollingdean Terr M 07773 396212  
E [j.gustard@ntlworld.com](mailto:j.gustard@ntlworld.com)

### Builders

**Earthwise Construction** Greendesign, construction and renovation .  
W [www.earthwiseconstruction.org](http://www.earthwiseconstruction.org)  
**A Team Builders Ltd** Plastering, damp-proofing.  
Contact Giles Walker T 385478 M 07725028393

The Round Hill Reporter is published by the Round Hill Society to keep residents in the area in touch with local news, events and each other. We try to present a fair and balanced view but the opinions expressed in this paper are not necessarily shared by all.

Please send your recommendations or warnings to the editor. Letters or ideas for articles are welcome – please contact the editor at the address shown above.

**Deadline for the Sept edition** 14th Aug